

© BBC – see http://www.bbc.co.uk/accessibility/win/sub_root.shtml for more help

Below are the step-by-step instructions on how to increase the font size in Internet Explorer 7

Instructions

For the first time in Internet Explorer a zoom feature is included which allows you to enlarge the whole browser window.

to do this press ' Ctrl ' + ' + ' to increase the zoom and ' Ctrl ' + ' - ' to decrease the zoom.

You can also change the text size. The way to do this does depend on how the site has been built.

For many sites you only need to do the following:

1. Open the ' Page ' menu with the mouse or by pressing ' Alt ' + ' P ' .
2. Select the ' Text Size ' option with the mouse or by pressing ' X ' . See Fig 1 .
3. Choose your preferred text size by clicking on it or by using the up and down arrow keys to select it and then press ' Enter ' .

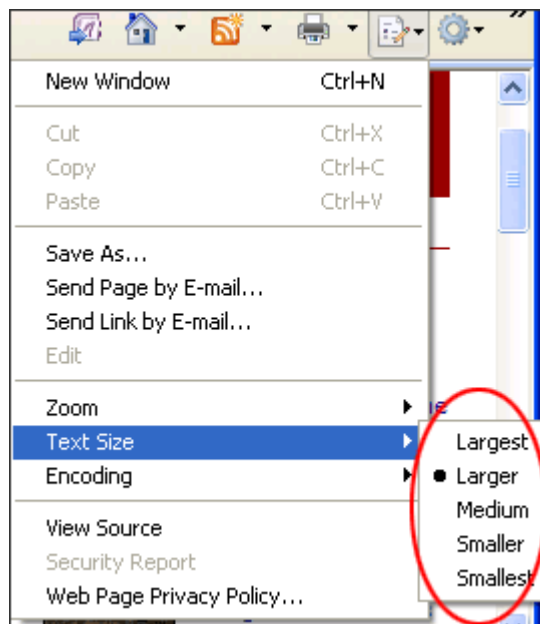


Fig 1

The text on the website should now have changed to reflect your choice.

However some websites have fixed the size of their text ('hard-coded') and as a result these websites will not show the change you have just made. If you would like to use larger text on these sites follow the following steps:

© BBC – see http://www.bbc.co.uk/accessibility/win/sub_root.shtml for more help

1. Click on the ' Tools ' menu with the mouse or press ' Alt '+' O ' .
2. Click on ' Internet Options ' option with the mouse or press ' O ' . You should now see the ' Internet Options ' box as shown in Fig 2 below.

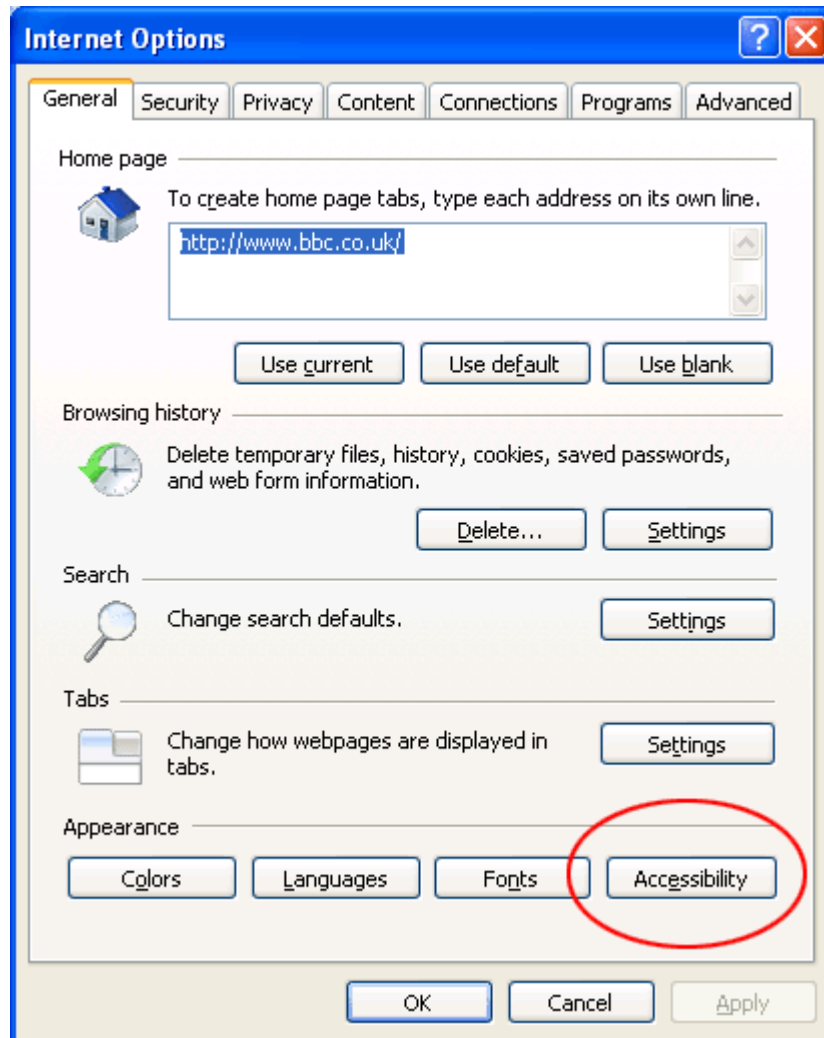


Fig 2

3. Click on the ' Accessibility ' button which is highlighted with a red circle in Fig 2 with the mouse or press ' Alt '+' E ' .

© BBC – see http://www.bbc.co.uk/accessibility/win/sub_root.shtml for more help

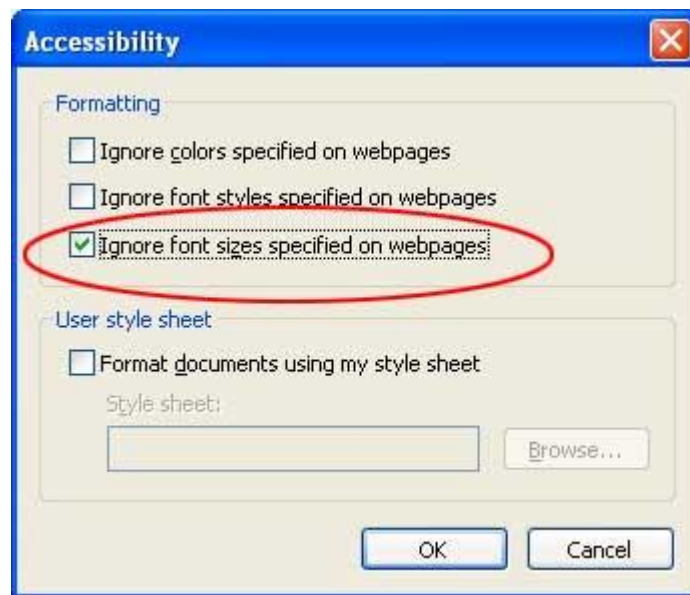


Fig 3

4. In the Accessibility box click the ' Ignore font sizes specified on web page ' checkbox to add a tick or press ' Alt '+' Z ' as shown in Fig 3.
5. Click the ' OK ' button to return to the Internet Options box.
6. Click on the ' OK ' button, or press ' Tab ' until ' OK ' is selected and then press ' Enter ' to return to Internet Explorer.

Note: If this does not work it could be because your computer settings cannot be changed due to local IT policies - contact your local IT support for further help.