

© BBC – see http://www.bbc.co.uk/accessibility/win/sub_root.shtml for more help

This page gives you step-by-step instructions on how to launch Magnifier in the XP versions of Windows

Instructions

Open the Windows magnifier using the following steps:

1. Open the ' Start ' menu by clicking on the ' Start ' button or by pressing the Windows logo key (located between the ' Ctrl ' and ' Alt ' keys on most keyboards) alternatively press ' Ctrl ' + ' Esc '.
2. Click on ' Programs ' or alternatively press ' P ' on the keyboard until 'Programs' is highlighted and then ' Enter ' .
3. Click on ' Accessories ' or press ' A ' on the keyboard until ' Accessories ' is highlighted and then press ' Enter ' .
4. Click on ' Accessibility ' or if you are using the keyboard, it will already be highlighted so just press ' Enter ' .
5. Click on ' Magnifier ' or press ' M ' and when ' Magnifier ' is highlighted, press ' Enter ' on the keyboard.
6. The magnifier is now turned on and the settings box appears.
7. You can click in the magnification level box to change the level of magnification (highlighted in Fig 1 below) or use the up and down arrow keys.
8. You can minimise the magnifier settings box by clicking the minimise button or by pressing ' Alt ' + ' Space ' and then press ' N ' .

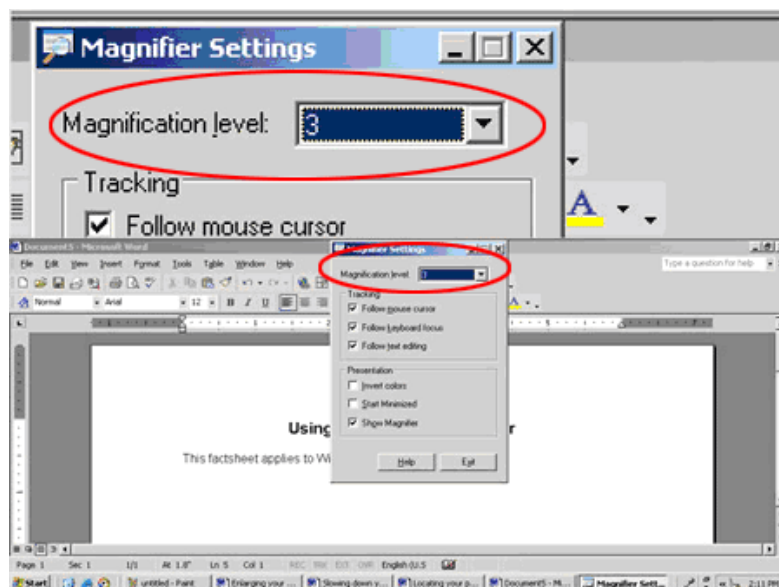


Fig 1

Note: If this does not work it could be because your computer settings cannot be changed due to local IT policies - contact your local IT support for further help.